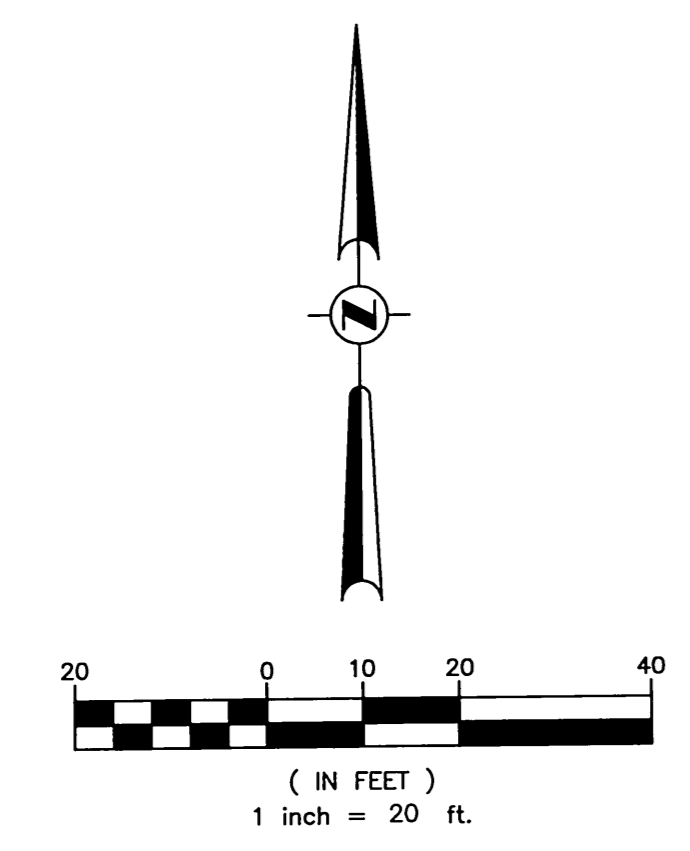


# A PLAT OF STUART CAY

A RE-PLAT OF LOT 3 AND LOTS 8-12, BLOCK 19, FRAZIER ADDITION, AS RECORDED IN PLAT BOOK 2, PAGE 66, PUBLIC RECORDS OF PALM BEACH (NOW MARTIN) COUNTY, FLORIDA LOCATED IN SECTION 5, TOWNSHIP 38 SOUTH, RANGE 41 EAST, CITY OF STUART, MARTIN COUNTY, FLORIDA

DATE: DECEMBER 2004



APPROXIMATE SHORELINE AND NORTHERLY BULKHEAD LINE OF CREEK AS SHOWN ON MAP PREPARED BY WM. H. ROAT AND APPROVED BY CITY OF STUART CITY COMMISSION ON JAN. 22, 1930. DUE TO CONDITION OF EXISTING SHORELINE, BULKHEAD LINE CANNOT BE MONUMENTED.

### SURVEYOR'S NOTES:

- SUBJECT PROPERTY LIES IN FLOOD ZONES X AND AE(EL 7) ACCORDING TO FLOOD INSURANCE RATE MAP NO. 12085C0134F. EFFECTIVE DATE: OCTOBER 4, 2002.
- THE SOUTH RIGHT OF WAY LINE OF FIFTH STREET IS ASSUMED TO BEAR S.89°51'00"W. AND ALL BEARINGS SHOWN HEREON REFER THERETO.
- UNLESS EASEMENT NOTE IS FOLLOWED BY RECORDING INFORMATION, EASEMENTS SHOWN HEREON ARE BEING DEDICATED BY THIS PLAT.

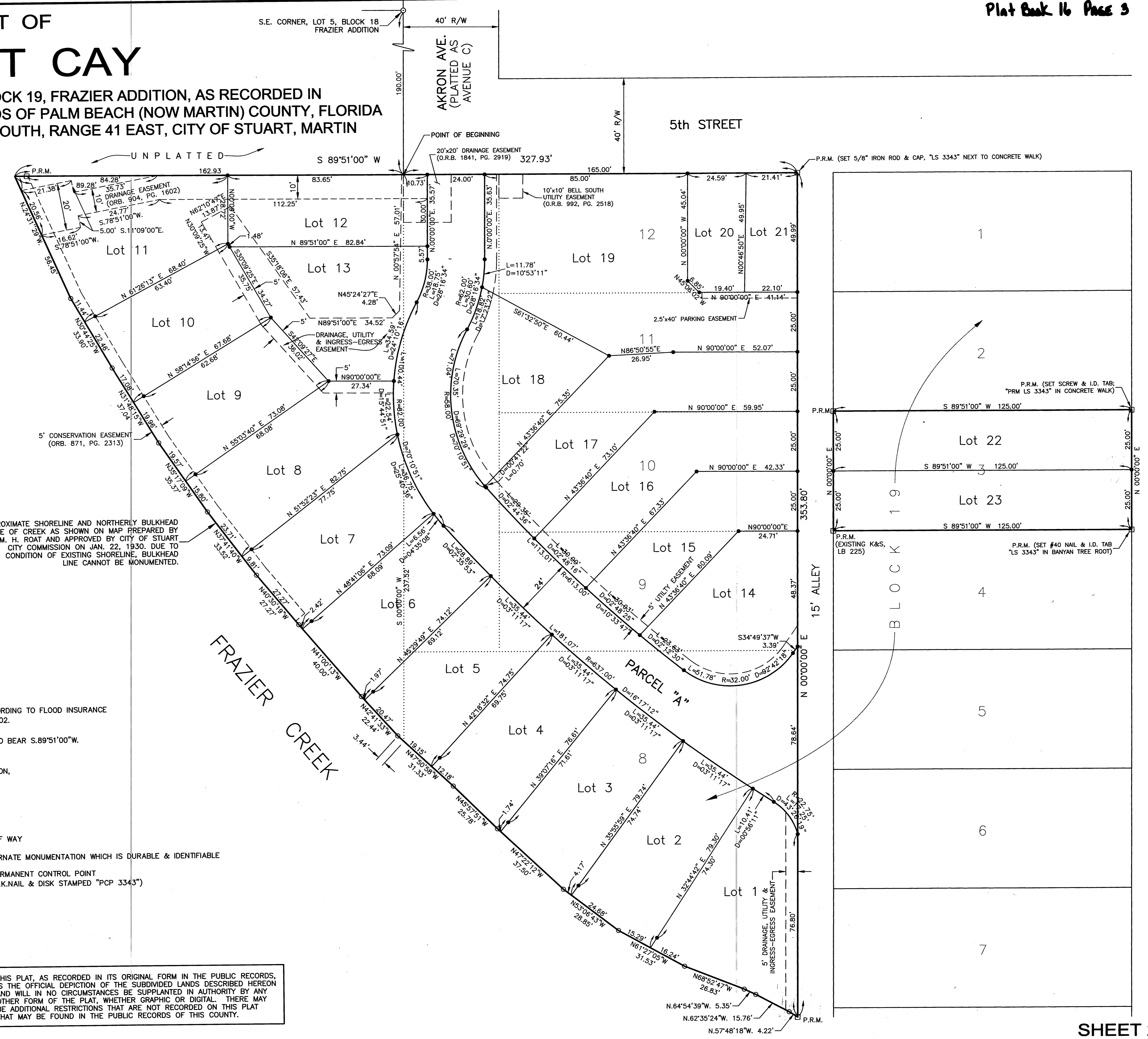
### LEGEND:

R=RADIUS D=CENTRAL ANGLE L=ARC LENGTH R/W=RIGHT OF WAY

- = MONUMENT=SET 5/8" IRON ROD w/I.D. CAP (LS 3343) OR ALTERNATE MONUMENTATION WHICH IS DURABLE & IDENTIFIABLE
- = P.R.M.=SET PERMANENT REFERENCE MARKER (4"x4" CONC. MARKER WITH DISK STAMPED "PRM 3343") UNLESS OTHERWISE NOTED
- ORB=MARTIN COUNTY OFFICIAL RECORDS BOOK
- P.C.P.=PERMANENT CONTROL POINT (P.K.NAIL & DISK STAMPED "PCP 3343")

NOTICE: THIS PLAT, AS RECORDED IN ITS ORIGINAL FORM IN THE PUBLIC RECORDS, IS THE OFFICIAL DEPICTION OF THE SUBDIVIDED LANDS DESCRIBED HEREON AND WILL IN NO CIRCUMSTANCES BE SUPPLANTED IN AUTHORITY BY ANY OTHER FORM OF THE PLAT, WHETHER GRAPHIC OR DIGITAL. THERE MAY BE ADDITIONAL RESTRICTIONS THAT ARE NOT RECORDED ON THIS PLAT THAT MAY BE FOUND IN THE PUBLIC RECORDS OF THIS COUNTY.

THIS INSTRUMENT PREPARED BY:  
Arthur Speedy for:  
C. Calvert Montgomery & Associates, Inc.  
P.O. Box 92, 959 S. Federal Highway  
Stuart, Florida 34994



CALIFORNIA AVE. (40' R/W)  
(PLATTED AS AVENUE B)

C:\Drawings\Current\Stuart\_Cay\Final\_Drawings\Plat\stuart2\_StatePlane.dwg Thu Dec 16 09:14:59 2004